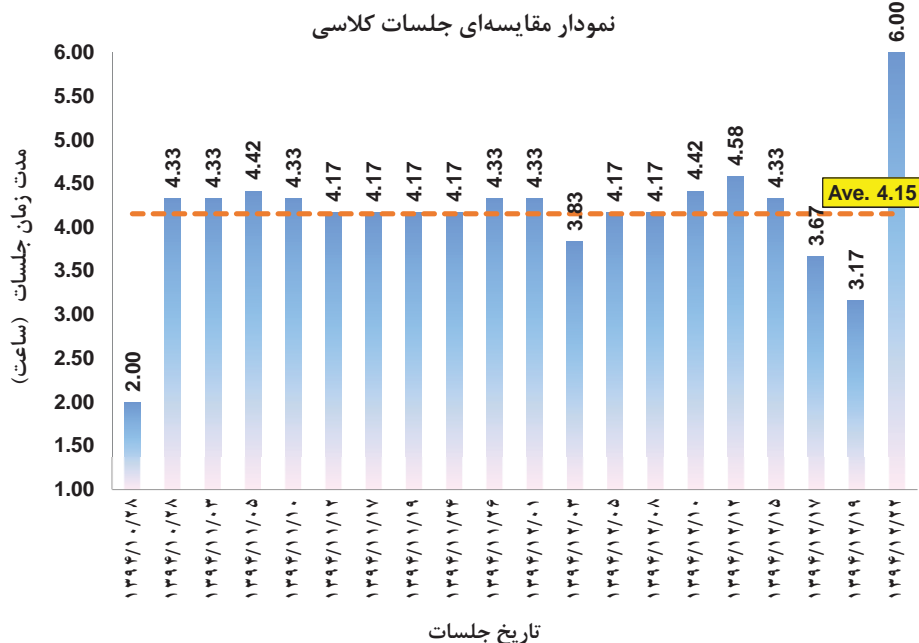


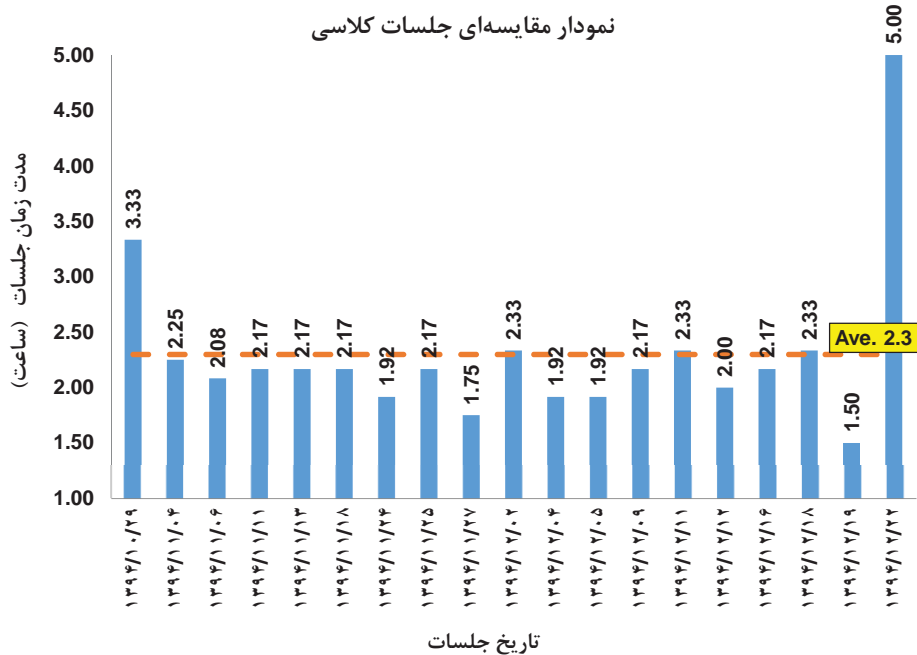
Excel Training Course-Level 2 (Class Duration)

No.	Date	Weekday	Start	Finish	Net	Net
1	1394/10/28	دوشنبه	08:45	10:45	02:00	2.00
2	1394/10/28	دوشنبه	13:50	18:10	04:20	4.33
3	1394/11/03	شنبه	13:50	18:10	04:20	4.33
4	1394/11/05	دوشنبه	13:50	18:15	04:25	4.42
5	1394/11/10	شنبه	13:50	18:10	04:20	4.33
6	1394/11/12	دوشنبه	13:50	18:00	04:10	4.17
7	1394/11/17	شنبه	14:00	18:10	04:10	4.17
8	1394/11/19	دوشنبه	13:50	18:00	04:10	4.17
9	1394/11/24	شنبه	13:50	18:00	04:10	4.17
10	1394/11/26	دوشنبه	13:50	18:10	04:20	4.33
11	1394/12/01	شنبه	13:50	18:10	04:20	4.33
12	1394/12/03	دوشنبه	13:55	17:45	03:50	3.83
13	1394/12/05	چهارشنبه	13:50	18:00	04:10	4.17
14	1394/12/08	شنبه	13:50	18:00	04:10	4.17
15	1394/12/10	دوشنبه	13:50	18:15	04:25	4.42
16	1394/12/12	چهارشنبه	13:50	18:25	04:35	4.58
17	1394/12/15	شنبه	13:50	18:10	04:20	4.33
18	1394/12/17	دوشنبه	13:50	17:30	03:40	3.67
19	1394/12/19	چهارشنبه	13:50	17:00	03:10	3.17
20	1394/12/22	شنبه	08:00	14:00	06:00	6.00
Total ==>>>>					83:05	83.08



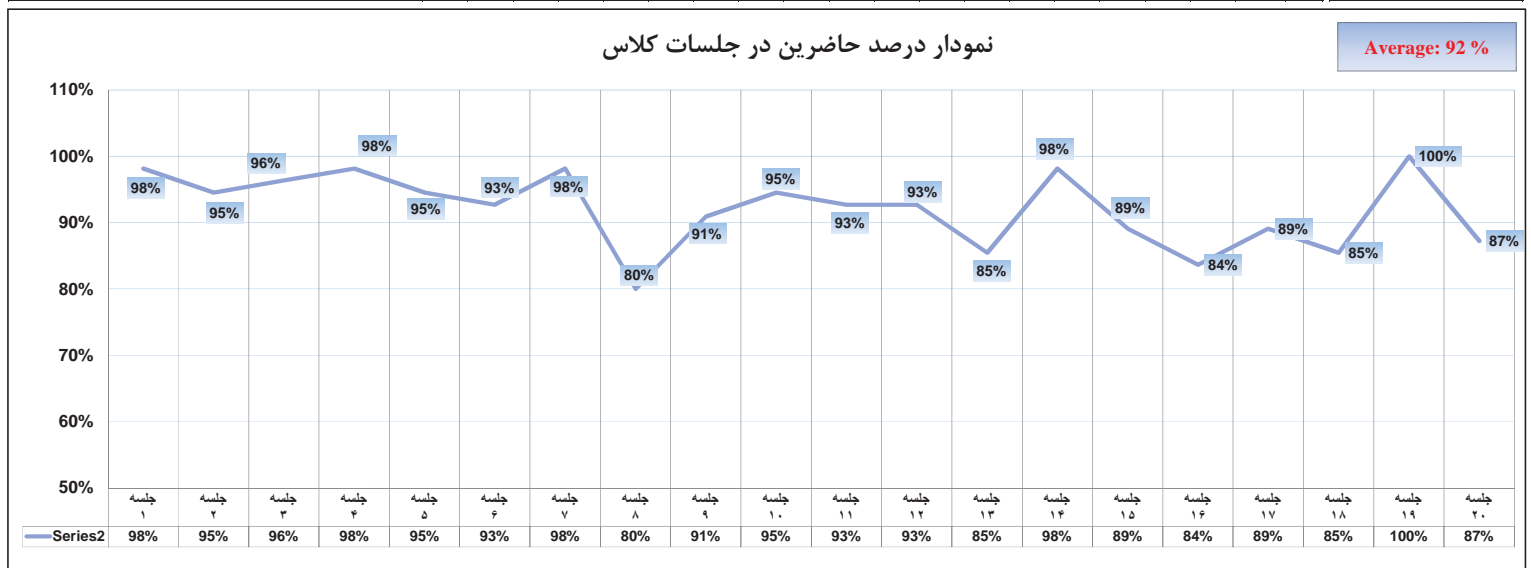
Excel Training Course-Level 2 (Class Duration-2)

No.	Date	Weekday	Start	Finish	Net	Net
1	1394/10/29	سه شنبه	13:50	17:10	03:20	3.33
2	1394/11/04	یکشنبه	13:45	16:00	02:15	2.25
3	1394/11/06	سه شنبه	14:00	16:05	02:05	2.08
4	1394/11/11	یکشنبه	13:50	16:00	02:10	2.17
5	1394/11/13	سه شنبه	13:50	16:00	02:10	2.17
6	1394/11/18	یکشنبه	13:50	16:00	02:10	2.17
7	1394/11/24	شنبه	08:50	10:45	01:55	1.92
8	1394/11/25	یکشنبه	13:50	16:00	02:10	2.17
9	1394/11/27	سه شنبه	14:00	15:45	01:45	1.75
10	1394/12/02	یکشنبه	13:50	16:10	02:20	2.33
11	1394/12/04	سه شنبه	13:50	15:45	01:55	1.92
12	1394/12/05	چهارشنبه	11:05	13:00	01:55	1.92
13	1394/12/09	یکشنبه	13:50	16:00	02:10	2.17
14	1394/12/11	سه شنبه	13:50	16:10	02:20	2.33
15	1394/12/12	چهارشنبه	11:00	13:00	02:00	2.00
16	1394/12/16	یکشنبه	13:50	16:00	02:10	2.17
17	1394/12/18	سه شنبه	13:50	16:10	02:20	2.33
18	1394/12/19	چهارشنبه	17:00	18:30	01:30	1.50
19	1394/12/22	شنبه	14:00	19:00	05:00	5.00
Total ==>>>>					43:40	43.67



Excel Training Course-Level 2 (Delay Form)																											
Class Group	No.	Name	1394/10/28	1394/10/28	1394/11/03	1394/11/05	1394/11/10	1394/11/12	1394/11/17	1394/11/19	1394/11/24	1394/11/26	1394/12/01	1394/12/03	1394/12/05	1394/12/08	1394/12/10	1394/12/12	1394/12/15	1394/12/17	1394/12/19	1394/12/22	Sum of Delay	Ave. of Delay	Points	Exam Group	
3	1		0	0	0	0	0	120	0	0	0	0	0	0	0	0	0	0	0	0	0	0	120	6	94	1	
3	2		120	120	120	120	120	120	0	0	0	120	0	0	0	0	0	0	0	120	0	0	0	960	48	0	1
3	3		0	0	0	0	0	0	0	0	0	0	0	0	0	0	0	0	0	0	0	0	0			100	1
2	4		0	0	0	0	0	0	0	0	0	0	0	0	0	0	0	0	0	0	0	0	0			100	1
2	5		0	0	0	0	0	0	0	0	0	0	120	0	0	0	120	0	120	120	120	0	120	720	36	0	1
3	6		0	0	0	0	0	0	0	120	120	0	0	0	0	0	0	0	0	0	0	0	0	240	12	88	1
1	7		0	0	0	0	0	0	0	0	0	0	0	0	0	0	0	0	0	0	0	0	0			100	1
2	8		0	0	0	0	0	0	0	0	0	0	0	0	0	0	0	0	0	0	120	0	0	120	6	94	1
3	9		0	0	0	0	0	0	0	0	0	0	0	0	0	120	0	0	0	0	0	0	0	120	6	94	1
3	10		0	120	0	0	0	0	0	0	0	0	0	0	0	0	0	0	120	0	0	0	0	240	12	88	1
3	11		0	0	0	0	0	0	0	0	0	0	0	0	0	0	0	0	0	0	0	0	0			100	1
3	12		0	0	0	0	0	0	0	0	0	0	0	0	0	0	0	0	0	0	0	0	0			100	1
3	13		0	0	0	0	0	0	0	0	0	0	0	0	0	120	0	0	0	0	0	0	0	120	6	94	1
3	14		0	0	0	0	0	0	0	0	0	0	0	0	0	0	0	120	0	0	0	0	0	120	6	94	2
2	15		0	0	0	0	0	0	0	0	0	0	0	0	0	0	0	0	0	0	0	0	0			100	2
3	16		0	0	0	0	0	0	0	0	0	0	0	0	0	0	120	0	0	0	0	0	0	120	6	94	2
3	17		0	0	0	0	0	0	0	120	0	0	0	0	120	120	0	0	0	0	0	0	0	360	18	0	2
3	18		0	0	120	0	0	0	120	120	0	0	120	120	120	0	0	0	120	0	0	120	960	48	0	2	
3	19		0	0	0	0	0	0	0	120	0	0	0	0	0	0	0	0	120	0	0	120	360	18	0	2	
2	20		0	0	0	0	0	0	0	0	0	0	0	0	0	0	0	0	0	0	0	0	0			100	2
1	21		0	0	0	0	0	0	0	0	0	0	0	0	0	0	0	0	0	0	0	0	0			100	2
1	22		0	0	0	0	0	0	0	0	0	0	0	0	0	0	0	0	0	0	0	0	0			100	2
1	23		0	0	0	0	0	120	0	0	0	0	0	0	0	0	0	0	0	0	0	0	0	120	6	94	2
1	24		0	0	0	0	0	0	0	0	120	0	0	0	0	120	0	0	0	0	0	0	0	240	12	88	2
2	25		0	0	0	0	0	0	0	0	0	0	0	0	0	0	0	120	0	120	0	0	0	240	12	88	2
1	26		0	0	0	0	0	0	0	120	0	120	120	0	0	0	120	120	0	120	0	0	720	36	0	2	
1	27		0	0	0	0	0	0	0	0	0	0	0	0	0	0	0	0	0	0	0	0	0			100	2
1	28		0	0	0	0	0	0	0	0	0	0	0	0	0	0	0	0	0	0	0	0	0			100	3
2	29		0	0	0	0	0	0	0	0	120	0	0	0	0	0	0	0	0	0	0	0	0	120	6	94	3
3	30		0	0	0	0	0	0	0	120	0	0	0	120	120	0	0	0	0	120	0	0	480	24	0	3	
2	31		0	0	0	0	0	0	0	0	0	0	0	0	0	0	0	0	0	0	0	0	0			100	3
1	32		0	0	0	0	120	0	0	0	0	0	0	0	0	0	120	120	0	0	0	0	360	18	0	3	
2	33		0	0	0	0	0	0	0	0	0	0	0	0	0	0	0	0	0	0	0	0	0			100	3
3	34		0	0	0	0	0	0	0	0	0	0	120	0	0	0	0	0	0	120	0	0	240	12	88	3	
2	35		0	0	0	0	0	0	0	0	0	0	0	0	0	0	0	0	0	0	0	0	0			100	3
2	36		0	0	0	0	0	0	0	0	0	0	0	0	0	0	0	0	0	0	0	0	120	120	6	94	3
2	37		0	0	0	0	0	0	0	0	0	0	120	0	0	0	0	0	0	0	0	0	0	120	6	94	3
1	38		0	0	0	0	0	0	0	0	0	0	0	0	0	0	0	0	0	0	0	0	0			100	3
1	39		0	0	0	0	0	0	0	0	0	0	0	0	0	0	0	0	0	0	0	0	0			100	3
3	40		0	0	0	0	120	0	0	120	120	0	0	0	0	0	120	120	0	0	0	0	600	30	0	3	
3	41		0	0	0	0	0	120	0	0	0	0	0	0	0	0	0	0	0	0	0	0	120	6	94	3	
2	42		0	0	0	0	0	0	0	0	0	0	0	0	0	0	0	0	0	0	0	0	120	120	6	94	4
2	43		0	0	0	0	0	0	0	0	0	0	0	0	0	0	0	0	0	120	0	0	120	6	94	4	
2	44		0	0	0	0	0	0	0	120	0	0	0	0	120	0	0	0	0	0	0	0	240	12	88	4	
3	45		0	0	0	0	0	0	0	120	0	0	0	0	0	0	0	0	0	0	0	0	120	6	94	4	
1	46		0	0	0	0	0	0	0	0	0	0	0	0	0	0	0	0	0	0	0	0	0			100	4
2	47		0	0	0	0	0	0	0	0	0	0	0	0	0	0	0	0	0	0	0	0	0			100	4
2	48		0	0	0	0	0	0	0	0	0	0	0	0	0	0	0	0	0	0	0	0	0			100	4
3	49		0	120	0	0	0	0	0	120	120	0	0	0	0	0	0	0	120	0	0	0	480	24	0	4	
3	50		0	0	0	0	0	0	0	0	0	0	0	0	0	0	0	0	0	0	0	0	0			100	4
3	51		0	0	0	0	0	0	0	0	0	0	0	0	0	0	0	0	0	0	0	0	0			100	4
2	52		0	0	0	0	0	0	0	0	0	0	0	0	0	0	0	0	0	0	0	0	120	120	6	94	4
1	53		0	0	0	0	0	0	0	0	0	0	0	0	0	0	0	0	0	0	0	0	0			100	4
1	54		0	0	0	0	0	0	0	0	0	0	0	0	0	0	120	120	0	0	0	0	240	12	88	4	
1	55		0	0	0	0	0	0	0	120	0	0	0	0	120	120	0	120	120	120	120	0	120	960	48	0	4

جلسه	جلسه ۱	جلسه ۲	جلسه ۳	جلسه ۴	جلسه ۵	جلسه ۶	جلسه ۷	جلسه ۸	جلسه ۹	جلسه ۱۰	جلسه ۱۱	جلسه ۱۲	جلسه ۱۳	جلسه ۱۴	جلسه ۱۵	جلسه ۱۶	جلسه ۱۷	جلسه ۱۸	جلسه ۱۹	جلسه ۲۰	متوسط حاضرین در کلاس
درصد حاضرین در جلسه	98%	95%	96%	98%	95%	93%	98%	80%	91%	95%	93%	93%	85%	98%	89%	84%	89%	85%	100%	87%	Average: 92 %
تعداد حاضرین در جلسه	54	52	53	54	52	51	54	44	50	52	51	51	47	54	49	46	49	47	55	48	

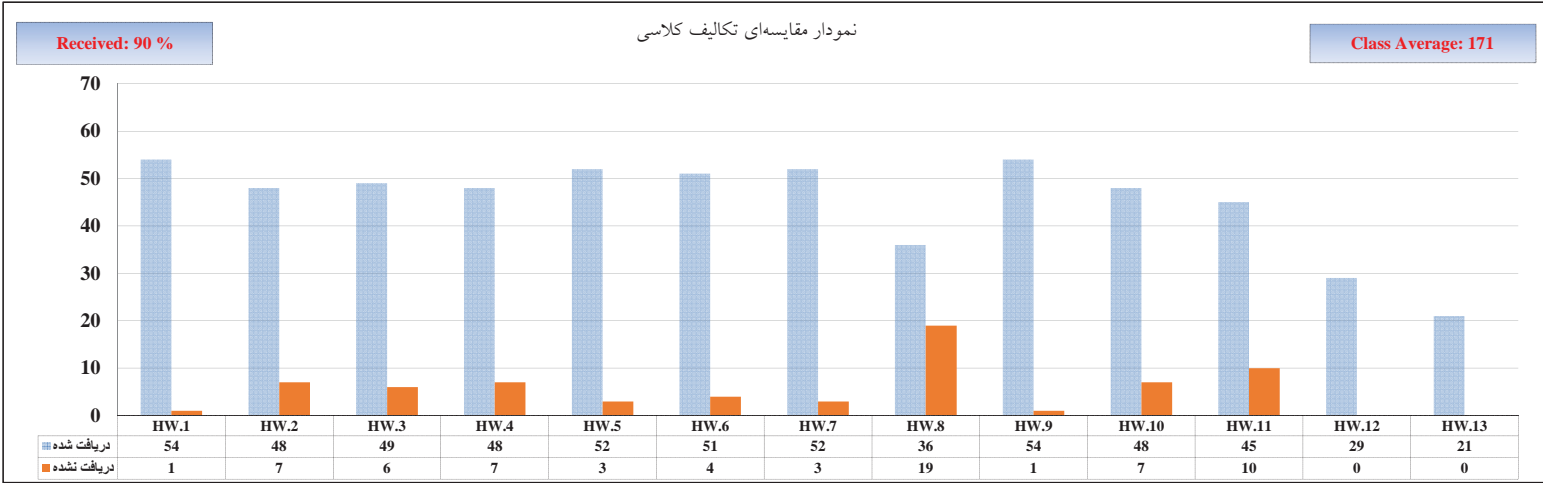


ارزش وزنی		5%	5%	5%	5%	5%	5%	5%	20%	15%	15%	15%	اختیاری		Points	تکالیف برتر	امتیاز تکالیف برتر	تکالیف اختیاری	Final Points
No.	Name	H-1	H-2	H-3	H-4	H-5	H-6	H-7	H-8	H-9	H-10	H-11	H-12	H-13					
1		A	A	A	A	A	A	A	F	A	A	F			130				130
2		F	A	A	F	A	A	A	A	A	A	A	A	A	180			60	200
3		A	A	A	A	A	A	A	A	A	A	A	A	A	200			60	200
4		A	A	A	A	A	A	A	A	A	A	F	A	A	170			60	200
5		A	A	A	F	A	A	A	F	A	A	A			150				150
6		A	A	A	A	A	A	A	F	A	A	F			130				130
7		A	A	A	A	A	A	A	A	A	A	A			200				200
8		A	A	A	A	A	A	A	A	A	A	A			200				200
9		A	A	F	A	A	A	A	A	A	F	A			160				160
10		A	A	A	A	F	F	A	A	A	A	A	A	A	180			60	200
11		A	F	A	A	A	A	A	A	A	A	A	A		190	3	10	30	200
12		A	A	A	A	A	A	A	A	A	A	F			170	8	40		200
13		A	A	A	A	A	A	A	A	A	A	A	A	A	200			60	200
14		A	A	A	F	A	A	A	A	A	F	A	A	A	160			60	200
15		A	A	A	A	A	A	A	F	A	A	A	A	A	160			60	200
16		A	A	A	A	A	A	A	A	A	A	F			170	9	30		200
17		A	F	F	A	A	A	F	A	A	A	A	A		170			30	200
18		A	A	A	A	A	A	A	A	A	A	A			200	6	10		200
19		A	A	A	A	A	A	A	F	A	A	A			160				160
20		A	A	A	A	A	A	A	A	A	A	A	A		200			30	200
21		A	A	A	A	A	A	A	A	A	A	A	A	A	200	4	10	60	200
22		A	A	A	A	A	A	A	A	A	A	A	A	A	200			60	200
23		A	A	A	A	A	A	A	A	A	F	A	A	A	170			60	200
24		A	A	A	A	A	A	A	F	A	A	A			160				160
25		A	A	A	A	A	A	A	F	A	F	F			100	7	10		110
26		A	F	F	F	F	F	F	F	F	F	F			10				10
27		A	A	A	A	A	A	A	A	A	A	A	A	A	200	5	10	60	200
28		A	A	A	A	A	A	A	A	A	A	A	A	A	200			60	200
29		A	F	A	A	A	A	A	A	A	F	A			160				160
30		A	A	A	A	A	A	A	F	A	A	A	A		160			30	190
31		A	A	F	F	A	A	A	A	A	A	A			180				180
32		A	A	A	A	A	A	A	A	A	A	A	A	A	200	12	30	60	200
33		A	A	A	A	A	A	A	A	A	A	A			200				200
34		A	A	A	A	A	A	A	A	A	A	A	A	A	200			60	200
35		A	A	A	A	A	A	A	A	A	A	A	A		200			30	200
36		A	A	A	A	A	A	A	F	A	A	A	A		160	1	10	30	200
37		A	A	A	A	A	A	A	A	A	A	A			200				200
38		A	F	A	A	A	A	A	A	A	A	A	A		190			30	200
39		A	A	A	A	A	A	A	F	A	A	A			160				160
40		A	F	F	A	F	F	F	F	A	A	F			80				80
41		A	A	A	F	A	A	A	F	A	A	F			120				120
42		A	A	A	A	A	A	A	F	A	F	A			130				130
43		A	A	A	A	A	A	A	A	A	A	A	A		200	10	30	30	200
44		A	A	A	A	A	A	A	A	A	A	A		A	200			30	200
45		A	A	A	A	A	A	A	F	A	A	A	A		160	2	10	30	200
46		A	A	A	A	A	F	A	A	A	A	A	A	A	190	11	30	60	200
47		A	F	F	F	A	A	A	F	A	A	F			100				100
48		A	A	A	A	A	A	A	F	A	A	A	A	A	160			60	200
49		A	A	A	A	A	A	A	A	A	A	A	A	A	200			60	200
50		A	A	A	A	A	A	A	A	A	A	A	A		200			30	200
51		A	A	A	A	A	A	A	A	A	A	A	A	A	200			60	200
52		A	A	A	A	A	A	A	A	A	A	A	A	A	200	13	30	60	200
53		A	A	A	A	A	A	A	F	A	A	A			160				160
54		A	A	A	A	A	A	A	A	A	A	A		A	200			30	200
55		A	A	A	A	A	A	A	F	A	A	A			160				160

A	Count	54	48	49	48	52	51	52	36	54	48	45	29	21
	Percent	98%	87%	89%	87%	95%	93%	95%	65%	98%	87%	82%	100%	100%
B	Count													
	Percent													
C	Count													
	Percent													
D	Count													
	Percent													
F	Count	1	7	6	7	3	4	3	19	1	7	10		
	Percent	2%	13%	11%	13%	5%	7%	5%	35%	2%	13%	18%		
		HW.1	HW.2	HW.3	HW.4	HW.5	HW.6	HW.7	HW.8	HW.9	HW.10	HW.11	HW.12	HW.13
Tot.	دریافت شده	54	48	49	48	52	51	52	36	54	48	45	29	21
	دریافت نشده	1	7	6	7	3	4	3	19	1	7	10		

Class Average: 171

Received: 90 %



Excel Training Course-Level 2 (Final Exam)

400	Subjects =====>	آدرس های	توابع	توابع	توابع	توابع	توابع	هدف	فیلتر	توابع	توابع	حفاظت	اعتبار	استخراج	جمع کل	امتیاز	امتیاز	
		نسبی و مطلق	ساده	شمارش	گرد کردن	ریاضی و منطقی	جستجو	وجود و عدم	بایی	کردن	متنی	شرطی	از داده ها	اطلاعات	اطلاعات از منابع خارجی			امتیازات
No.	Points =====>	5	3	3	2	4	16	3	7	10	7	20	5	5	10	100		400
1		5	3	1	2	4	14	3	7	0	0	20	0	0	0	59		236
2		5	3	3	2	4	16	3	7	10	7	8	5	5	10	88	25	377
3		5	3	0	2	4	14	3	7	10	7	20	5	0	0	80	34	354
4		5	3	3	2	4	14	3	7	5	7	20	5	5	5	88		352
5		0	0	0	0	0	0	0	0	0	0	0	0	0	0	0		0
6		5	3	2	2	4	14	0	7	10	0	20	5	5	0	77		308
7		5	3	3	1.6	4	12	3	7	10	0	20	0	0	0	69		274
8		5	3	0	2	4	14	3	7	0	7	20	5	0	0	70		280
9		5	3	0	0	3	6	3	0	5	0	20	0	0	0	45		179
10		5	3	0	2	4	16	3	0	5	7	20	0	5	0	70		280
11		5	3	3	2	4	16	3	7	0	7	20	0	5	0	75		300
12		5	3	3	1.6	4	12	2	7	0	0	20	5	0	0	63		250
13		5	3	3	2	4	16	3	7	10	0	20	0	5	5	83	30	362
14		0.5	3	2	2	4	2	3	7	5	0	16	5	5	5	60		238
15		5	3	3	2	4	16	3	7	5	7	16	5	5	5	86	34	378
16		5	3	0	2	4	8	3	7	0	0	16	0	0	0	47		188
17		5	3	0	2	4	16	3	7	0	7	20	5	5	5	82	40	368
18		0	0	0	0	0	0	0	0	0	0	0	0	0	0	0		0
19		0	0	0	0	0	0	0	0	0	0	0	0	0	0	0		0
20		5	3	3	2	4	16	3	7	0	7	20	5	5	5	85	36	376
21		5	3	0	0	3	2	0	7	0	0	8	0	0	5	33		131
22		5	3	3	2	4	16	3	7	10	7	20	5	5	5	95	34	400
23		5	3	3	2	4	16	2	7	0	7	20	5	0	10	84	38	374
24		5	3	3	2	4	16	2	7	0	7	20	0	5	10	84		336
25		5	3	2	2	3	10	2	7	0	7	0	0	0	0	40		161
26		5	3	0	2	4	10	2	0	0	0	12	0	0	0	38		150
27		5	3	3	2	4	8	3	7	0	7	20	5	0	0	67		268
28		5	3	3	2	4	10	3	7	0	7	20	5	3	2	74		296
29		5	3	3	2	4	16	3	7	0	7	20	0	5	0	75		300
30		5	3	0	2	4	8	3	7	0	7	16	3	0	5	63		252
31		5	3	3	2	4	2	3	7	10	7	20	5	0	0	71		284
32		5	3	3	2	4	16	3	7	0	7	20	0	5	5	80	40	358
33		5	3	3	2	4	16	3	7	10	7	20	5	5	5	95	42	400
34		0	3	0	0	4	4	0	0	0	0	0	0	0	0	11		44
35		5	3	0	2	4	10	3	7	0	7	20	0	0	0	61		244
36																0		0
37		5	3	3	2	4	16	3	7	10	7	16	5	5	5	91	38	400
38		5	3	3	2	4	16	3	7	10	7	16	5	0	0	81	24	348
39		5	3	3	2	4	12	3	7	0	7	0	5	5	5	61		244
40		0	3	0	0	3	6	0	0	0	0	16	5	0	0	33		132
41		5	3	3	2	4	10	3	7	10	0	20	5	2	0	74		296
42		0	0	0	0	0	0	0	0	0	0	0	0	0	0	0		0
43		5	3	0	2	4	10	3	7	0	7	20	5	5	5	76		304
44		5	3	3	2	3	12	3	7	10	7	20	5	5	0	85	24	363
45		5	3	0	2	4	14	3	7	10	7	20	0	0	0	75		300
46		0	3	3	2	4	16	2	7	0	7	16	5	0	0	65		260
47		5	3	0	2	4	12	3	7	0	7	20	5	0	0	68		272
48		5	3	3	2	4	14	3	7	10	7	20	5	0	0	83		332
49		5	3	0	2	4	8	3	7	10	7	20	5	5	0	79		314
50		5	3	3	2	4	16	3	7	0	7	20	5	5	5	85	21	361
51		5	3	3	2	4	10	3	7	0	7	20	0	5	10	79		314
52		0	0	0	0	0	0	0	0	0	0	0	0	0	0	0		0
53		5	3	3	2	4	8	3	7	0	0	8	0	5	0	48		192
54		5	3	0	2	4	14	3	7	0	7	20	5	5	10	85	5	343
55		0	0	0	0	0	0	0	0	0	0	0	0	0	0	0		0
	Ave.=====>	5	3	3	2	4	12	3	7	9	7	18	5	5	6	70	31	289

Excel Training Course-Level 2 (Dept. Ranking In Comparing to Average)

No.	Course =====> Average		97 - Points		180 - Points		71 - Points		141 - Points		290 - Points		720 - Points	
	Dept.	No. Of Students	On Time Arrival	Rank	Homework	Rank	Class Activity	Rank	Quizes	Rank	Final Exam	Rank	Total Grade	Rank
1	PI	13	↓ 67	9	↔ 177	7	↔ 72	6	↔ 134	6	↔ 216	6	↔ 664	6
2	PR	10	↔ 89	5	↑ 186	6	↑ 87	3	↑ 165	2	↑ 315	2	↑ 841	2
3	EL	6	↔ 80	8	↑ 200	1	↓ 29	10	↑ 152	4	↑ 312	3	↑ 772	4
4	MD	4	↑ 94	2	↑ 190	4	↑ 95	2	↑ 154	3	↑ 343	1	↑ 876	1
5	IN	8	↔ 86	7	↑ 188	5	↔ 80	4	↑ 147	5	↔ 255	5	↔ 755	5
6	ST	10	↓ 57	10	↔ 156	9	↔ 63	8	↔ 118	8	↔ 206	7	↔ 599	7
7	RD	1	↑ 94	2	↑ 200	1	↓ 30	9	↓ 69	10	↓ 0	10	↓ 393	10
8	PJ	1	↑ 94	2	↔ 160	8	↔ 70	7	↓ 93	9	↔ 179	8	↔ 596	8
9	PQ	1	↔ 88	6	↓ 110	10	↔ 80	4	↔ 128	7	↔ 162	9	↔ 567	9
10	DCC	1	↑ 100	1	↑ 200	1	↑ 100	1	↑ 168	1	↑ 260	4	↑ 828	3
Total =>		55												

Excel Training Course-Level 2 (Total Grade)

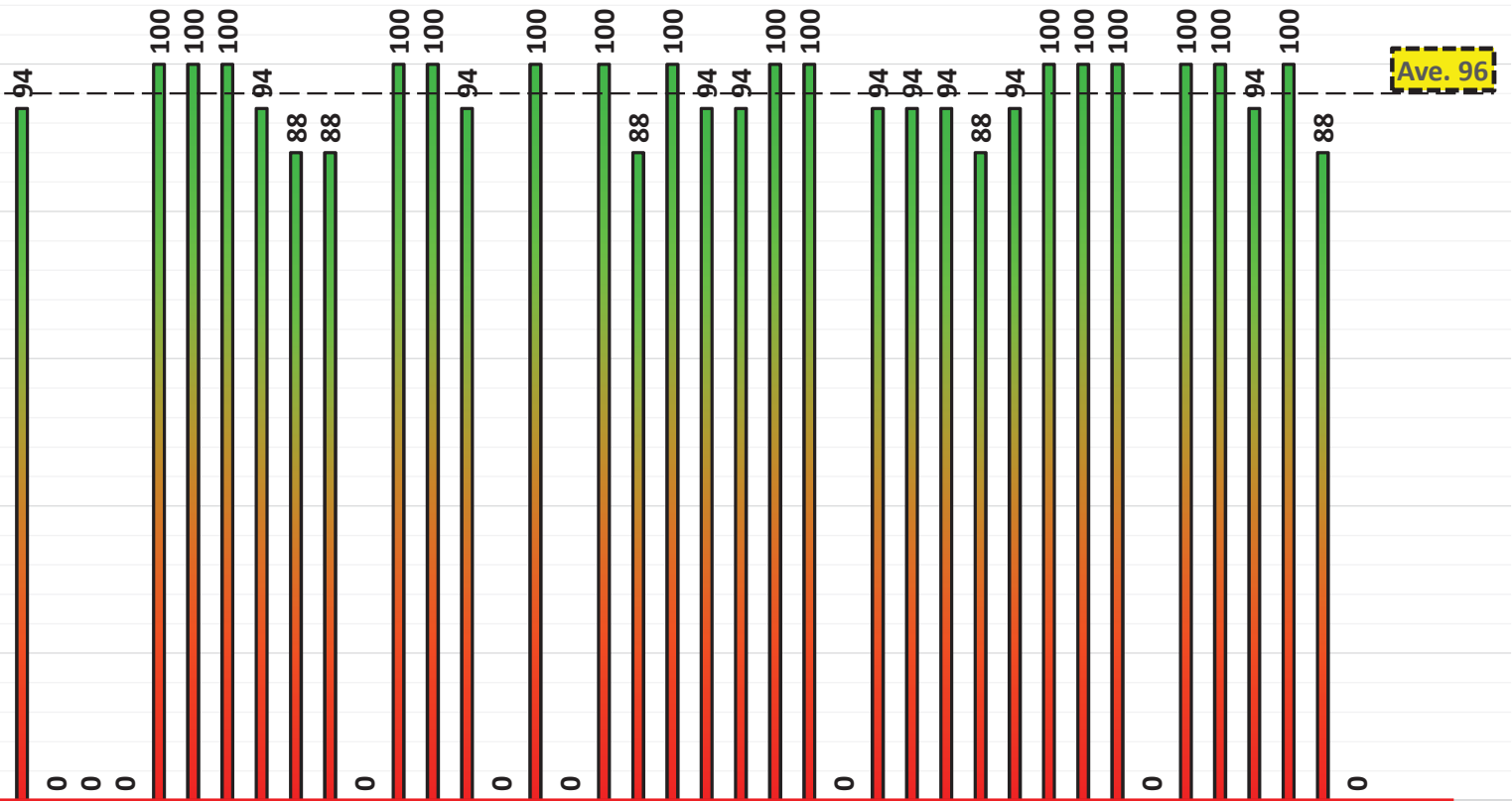
No.	Name	Dept	100 - Points	200 - Points	100 - Points	200 - Points	600 - Points	400 - Points	1000 - Points	Recommended For Higher Level	Rank
			On Time Arrival	Homework	Class Activity	Quizzes	Before Final	Final Exam	Total Grade		
1		PI	👆 94	👉 130	👇 10	👇 159	👉 393	👉 236	👉 629	🚫	42
2		EL	👇 0	👆 200	👉 50	👇 130	👉 380	👆 377	👉 757	🚫	32
3		MD	👆 100	👆 200	👆 100	👇 158	👆 558	👆 354	👆 912	👍	9
4		IN	👆 100	👆 200	👆 100	👉 176	👆 576	👆 352	👆 928	👍	7
5		ST	👇 0	👉 150	👉 30	👇 43	👉 223	👇 0	👇 223		55
6		ST	👆 88	👉 130	👉 50	👇 108	👉 376	👆 308	👉 684	🚫	36
7		PR	👆 100	👆 200	👆 100	👉 178	👆 578	👉 274	👆 852	👍	16
8		PI	👆 94	👆 200	👆 100	👇 168	👆 562	👉 280	👆 842	👍	19
9		PJ	👆 94	👆 160	👉 70	👇 93	👉 417	👉 179	👉 596	🚫	44
10		EL	👆 88	👆 200	👇 10	👇 163	👆 461	👉 280	👉 741	🚫	33
11		EL	👆 100	👆 200	👇 10	👇 169	👆 479	👆 300	👉 779	🚫	29
12		IN	👆 100	👆 200	👉 80	👇 162	👆 542	👉 250	👆 792	🚫	27
13		EL	👆 94	👆 200	👉 80	👇 146	👆 520	👆 362	👆 882	👍	13
14		EL	👆 94	👆 200	👇 10	👇 154	👆 458	👉 238	👉 696	🚫	34
15		PR	👆 100	👆 200	👆 100	👉 179	👆 579	👆 378	👆 957	👍	4
16		IN	👆 94	👆 200	👉 80	👇 129	👆 503	👉 188	👉 691	🚫	35
17		IN	👇 0	👆 200	👉 70	👇 162	👉 432	👆 368	👆 800	👍	26
18		PI	👇 0	👆 200	👉 70	👇 36	👉 306	👇 0	👇 306		51
19		PI	👇 0	👆 160	👉 50	👇 67	👉 277	👇 0	👇 277		53
20		ST	👆 100	👆 200	👆 100	👇 171	👆 571	👆 376	👆 947	👍	5
21		PI	👆 100	👆 200	👆 100	👇 147	👆 547	👉 131	👉 678	🚫	37
22		ST	👆 100	👆 200	👆 100	👇 170	👆 570	👆 400	👆 970	👍	1
23		MD	👆 94	👆 200	👆 100	👉 174	👆 568	👆 374	👆 942	👍	6
24		ST	👆 88	👆 160	👉 80	👇 138	👆 466	👆 336	👆 802	👍	24
25		PQ	👆 88	👉 110	👉 80	👇 128	👉 406	👉 161	👉 567	🚫	45
26		ST	👇 0	👇 10	👇 10	👇 115	👇 135	👉 150	👇 285		52
27		PR	👆 100	👆 200	👆 100	👉 178	👆 578	👉 268	👆 846	👍	18
28		PR	👆 100	👆 200	👉 80	👇 165	👆 545	👉 296	👆 841	👍	20
29		MD	👆 94	👆 160	👆 100	👇 132	👆 486	👆 300	👆 786	🚫	28
30		ST	👇 0	👆 190	👉 80	👇 154	👉 424	👉 252	👉 676	🚫	38
31		PR	👆 100	👆 180	👆 100	👇 163	👆 543	👉 284	👆 827	👍	23
32		PI	👇 0	👆 200	👆 100	👉 178	👆 478	👆 358	👆 836	👍	21
33		PR	👆 100	👆 200	👆 100	👇 169	👆 569	👆 400	👆 969	👍	2
34		ST	👆 88	👆 200	👉 70	👇 97	👆 455	👇 44	👉 498	🚫	46
35		IN	👆 100	👆 200	👆 100	👇 158	👆 558	👉 244	👆 802	👍	25
36		IN	👆 94	👆 200	👆 100	👇 77	👆 471	👇 0	👉 471	🚫	47
37		PR	👆 94	👆 200	👆 100	👇 171	👆 565	👆 400	👆 965	👍	3
38		PR	👆 100	👆 200	👆 100	👇 164	👆 564	👆 348	👆 912	👍	9
39		PI	👆 100	👆 160	👆 100	👇 164	👆 524	👉 244	👉 768	🚫	31
40		PR	👇 0	👉 80	👇 10	👇 105	👉 195	👉 132	👇 327		50
41		PI	👆 94	👉 120	👇 10	👇 146	👉 370	👉 296	👉 666	🚫	40
42		PI	👆 94	👉 130	👆 100	👇 54	👉 378	👇 0	👇 378		49
43		PI	👆 94	👆 200	👆 100	👇 168	👆 562	👆 304	👆 866	👍	14
44		PR	👆 88	👆 200	👉 80	👉 177	👆 545	👆 363	👆 908	👍	11
45		PI	👆 94	👆 200	👉 80	👉 174	👆 548	👆 300	👆 848	👍	17
46		DCC	👆 100	👆 200	👆 100	👇 168	👆 568	👉 260	👆 828	👍	22
47		IN	👆 100	👉 100	👇 10	👇 141	👉 351	👉 272	👉 623	🚫	43
48		PI	👆 100	👆 200	👆 100	👇 165	👆 565	👆 332	👆 897	👍	12
49		PI	👇 0	👆 200	👇 10	👇 114	👉 324	👆 314	👉 638	🚫	41
50		IN	👆 100	👆 200	👆 100	👇 166	👆 566	👆 361	👆 927	👍	8
51		EL	👆 100	👆 200	👇 10	👇 149	👆 459	👆 314	👉 773	🚫	30
52		RD	👆 94	👆 200	👉 30	👇 69	👉 393	👇 0	👇 393		48
53		ST	👆 100	👆 160	👆 100	👇 121	👆 481	👉 192	👉 673	🚫	39
54		MD	👆 88	👆 200	👉 80	👇 152	👆 520	👆 343	👆 863	👍	15
55		ST	👇 0	👆 160	👇 10	👇 57	👉 227	👇 0	👇 227		54
Average			97	180	71	141	467	290	720	16 Persons	

Excel Training Course-Level 2

On Time Arrival

60% Under Ave. (33 Persons)

40% Over Ave. (22 Persons)



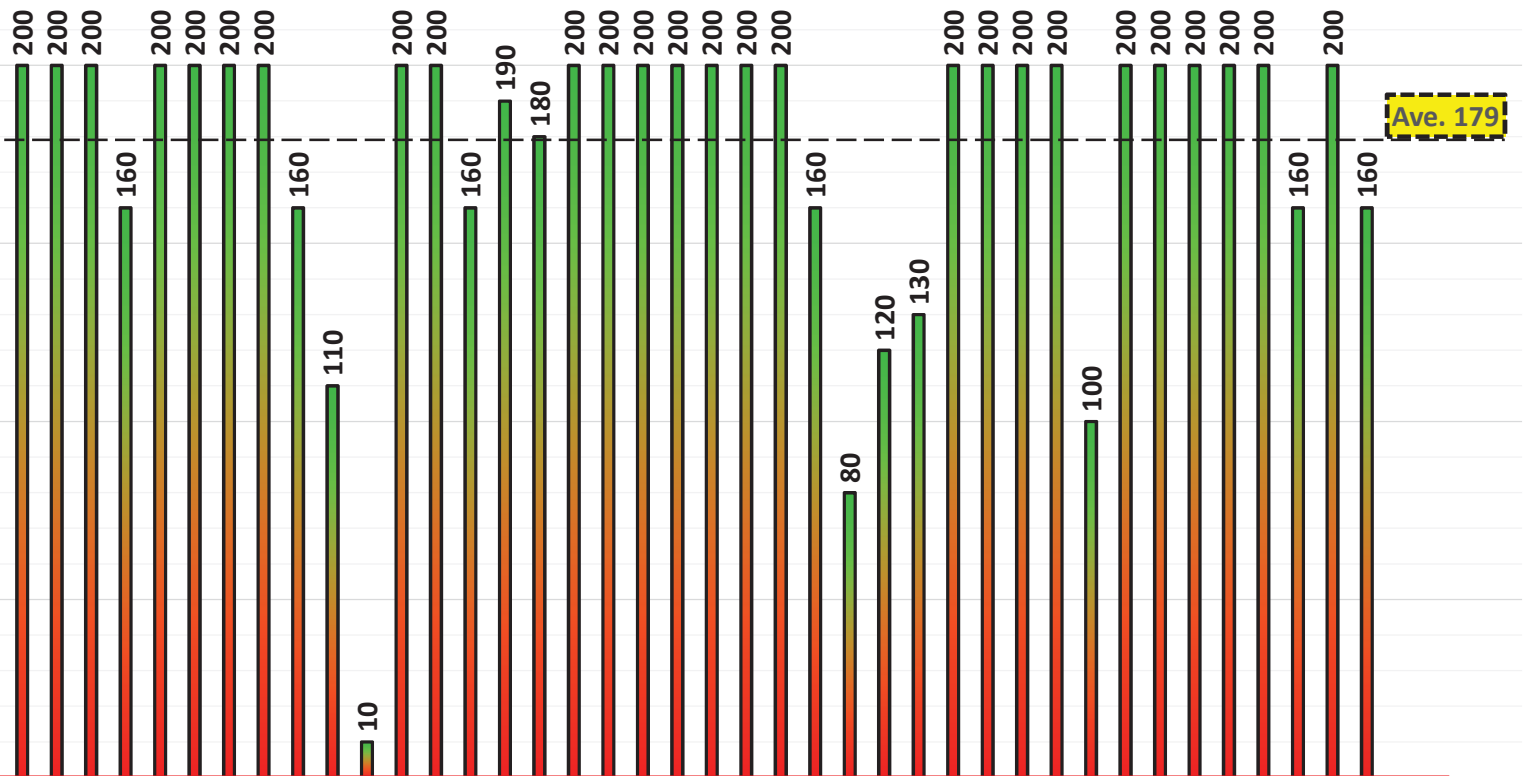
Ave. 96

Excel Training Course-Level 2

Homework

29% Under Ave. (16 Persons)

71% Over Ave. (39 Persons)



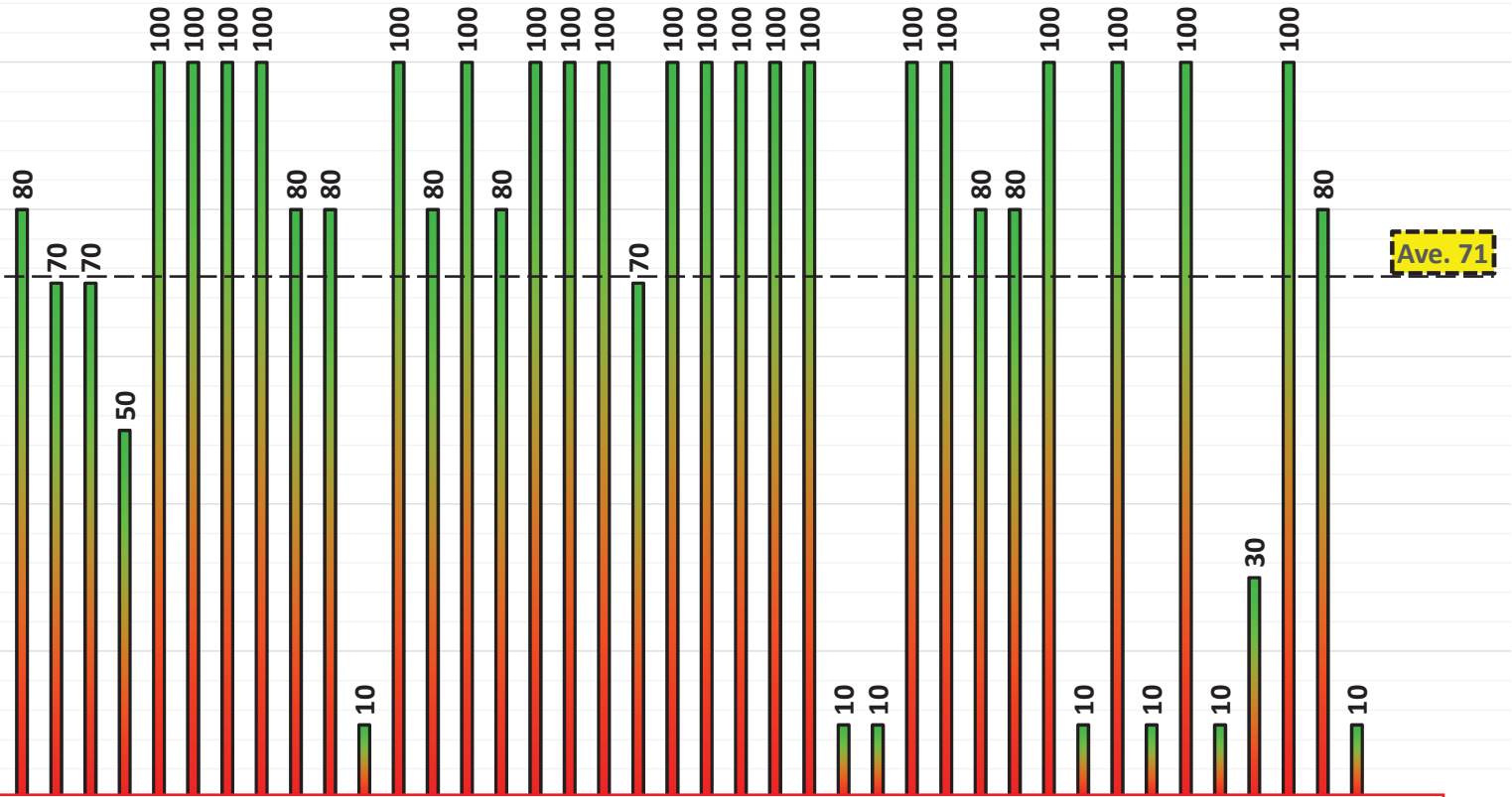
Ave. 179

Excel Training Course-Level 2

Class Activity

36% Under Ave. (20 Persons)

64% Over Ave. (35 Persons)



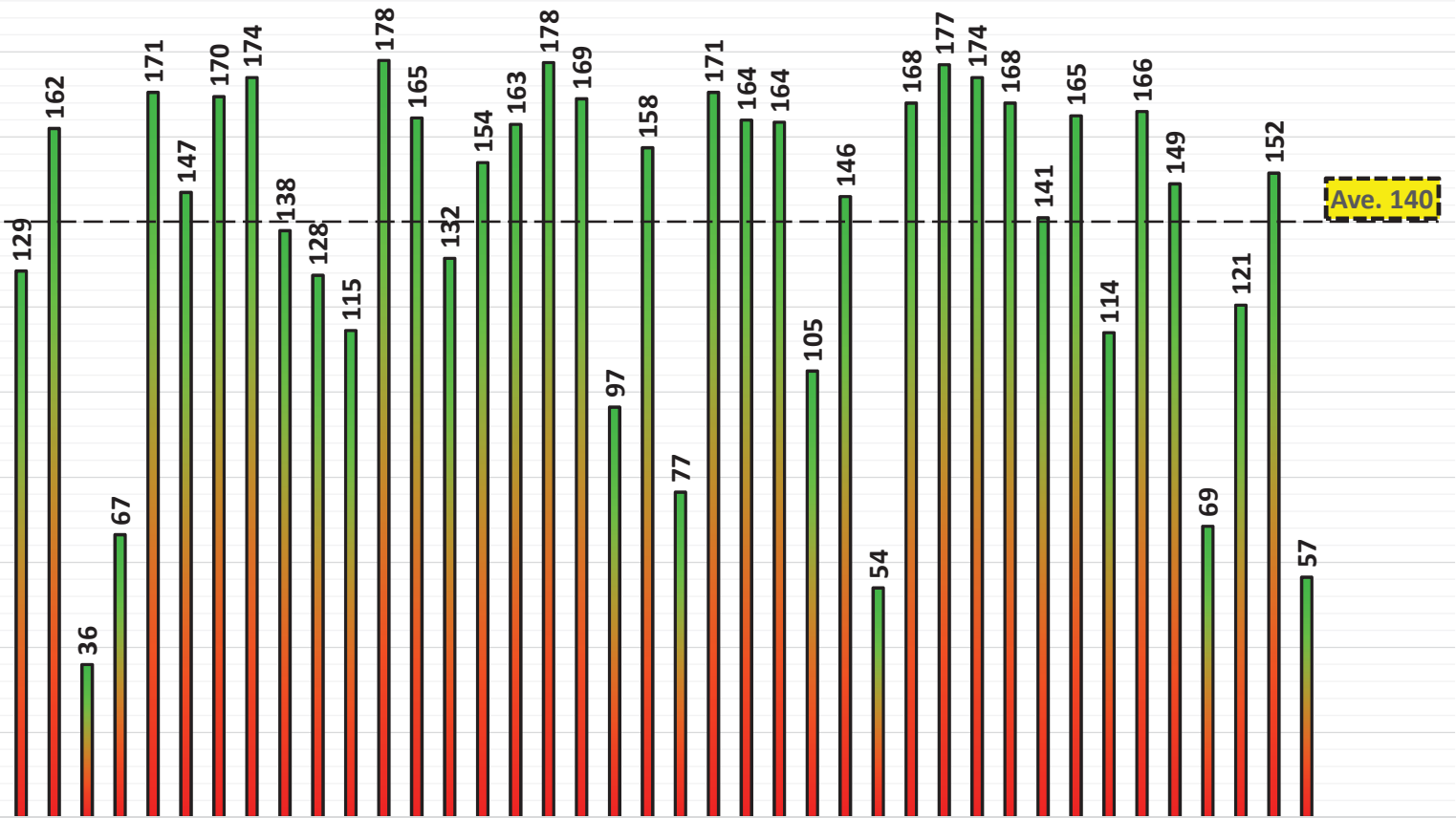
Ave. 71

Excel Training Course-Level 2

Quizes

35% Under Ave. (19 Persons)

65% Over Ave. (36 Persons)



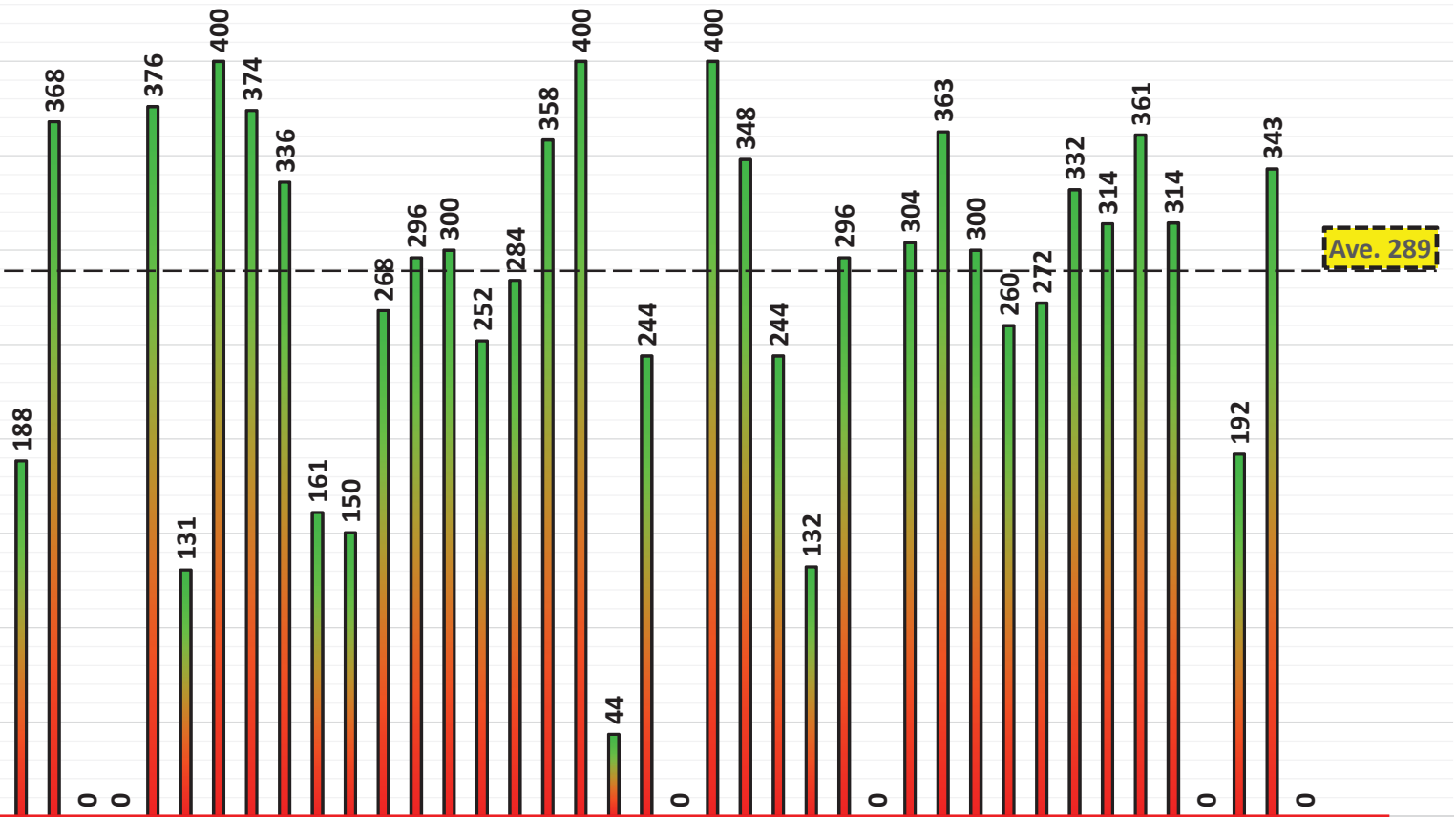
Ave. 140

Excel Training Course-Level 2

Final Exam

51% Under Ave. (28 Persons)

49% Over Ave. (27 Persons)

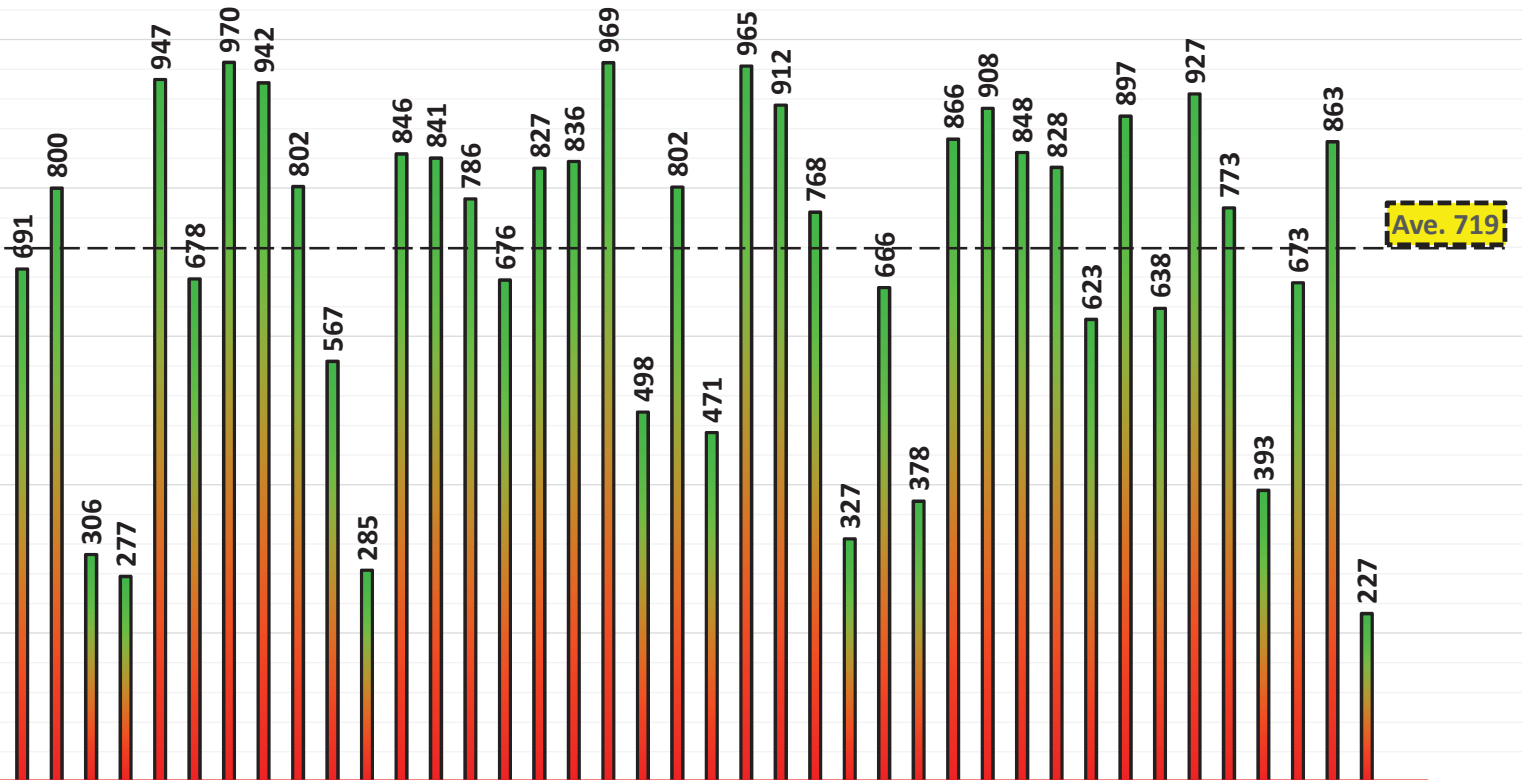


Excel Training Course-Level 2

Total Grade

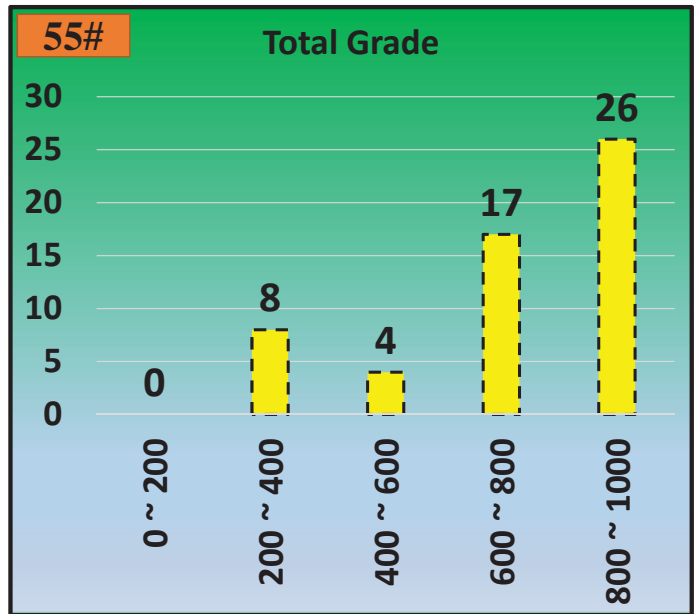
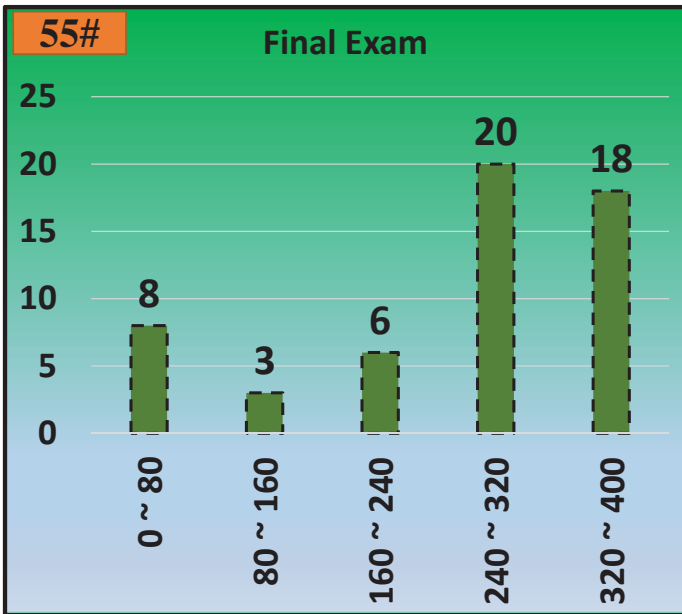
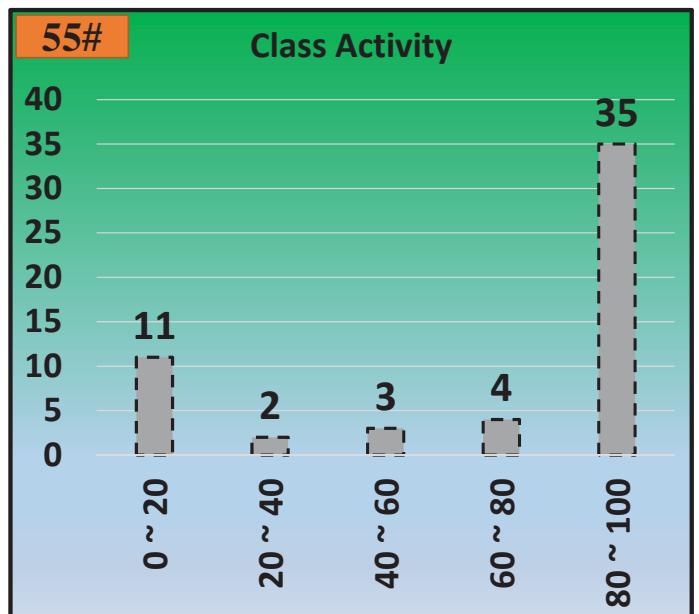
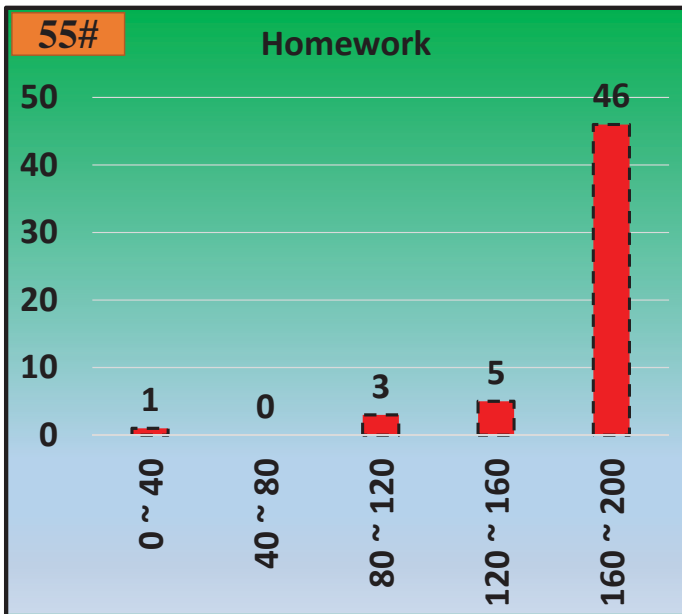
40% Under Ave. (22 Persons)

60% Over Ave. (33 Persons)



Ave. 719

Training Course-Level 2 (Grade Distribution In Details)



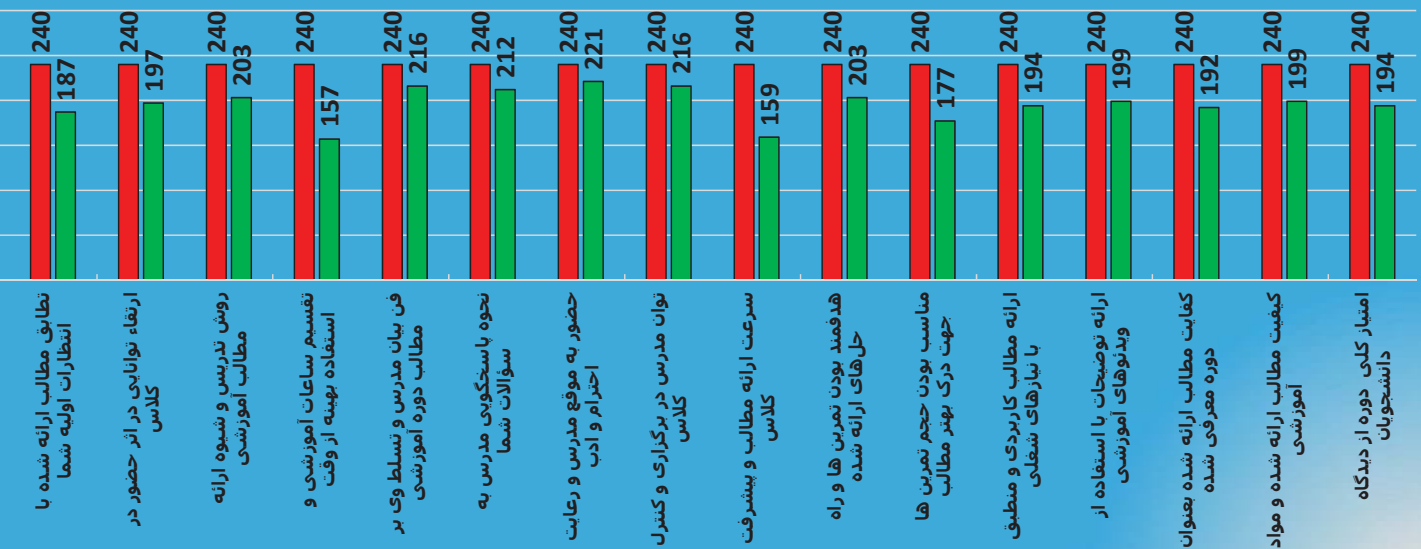
نتایج نظرسنجی کیفیت دوره آموزشی

	شیوه ارزش گذاری					تعداد شرکت کنندگان	حداکثر ممکن	حداکثر میانگین ممکن	کسب شده	درصد موفقیت	میانگین کسب شده
	1	2	3	4	5						
	بسیار ضعیف	ضعیف	متوسط	خوب	عالی						
وضعیت کامپیوتر و تعداد نفرات کلاس	1	6	25	15	1	48#	240	5	135	56%	2.81
هم سطح بودن افراد	3	12	14	16	3	48#	240	5	140	58%	2.92
آشنایی قبلی با م	4	4	23	17		48#	240	5	139	58%	2.90
تطابق مطالب ارائه	1	3	25	18	1	48#	240	5	129	54%	2.69
ارتقاء توانایی در ارتقاء		2	9	29	8	48#	240	5	187	78%	3.90
روش تدریس و تقسیم ساعات			7	29	12	48#	240	5	197	82%	4.10
فن بیان مدرس و نحوه پاسخگویی			5	27	16	48#	240	5	203	85%	4.23
حضور به موقع مد		12	15	17	4	48#	240	5	157	65%	3.27
توان مدرس در برگ			2	20	26	48#	240	5	216	90%	4.50
سرعت ارائه مطالب			4	20	24	48#	240	5	212	88%	4.42
هدفمند بودن تمرین			1	17	30	48#	240	5	221	92%	4.60
مناسب بودن حج	1		1	22	25	48#	240	5	216	90%	4.50
ارائه مطالب کاربر		9	14	22	2	48#	240	5	159	66%	3.31
ارائه توضیحات با ا		1	4	26	17	48#	240	5	203	85%	4.23
کفایت مطالب ارائه	1	2	13	27	5	48#	240	5	177	74%	3.69
کیفیت مطالب ارائه			5	32	10	48#	240	5	194	81%	4.04
امتیاز کلی دوره		1	4	30	13	48#	240	5	199	83%	4.15
		1	7	31	9	48#	240	5	192	80%	4.00
			4	33	11	48#	240	5	199	83%	4.15
		6	34	8	48#	240	5	194	81%	4.04	

نسبت میانگین کسب شده به میانگین کل ()

76%

نتایج نظرسنجی کیفیت دوره



نتایج نظرسنجی کیفیت دوره آموزشی

